

MONTHLY MEMBERSHIP PROGRESS REPORT

LOCATION INDIA

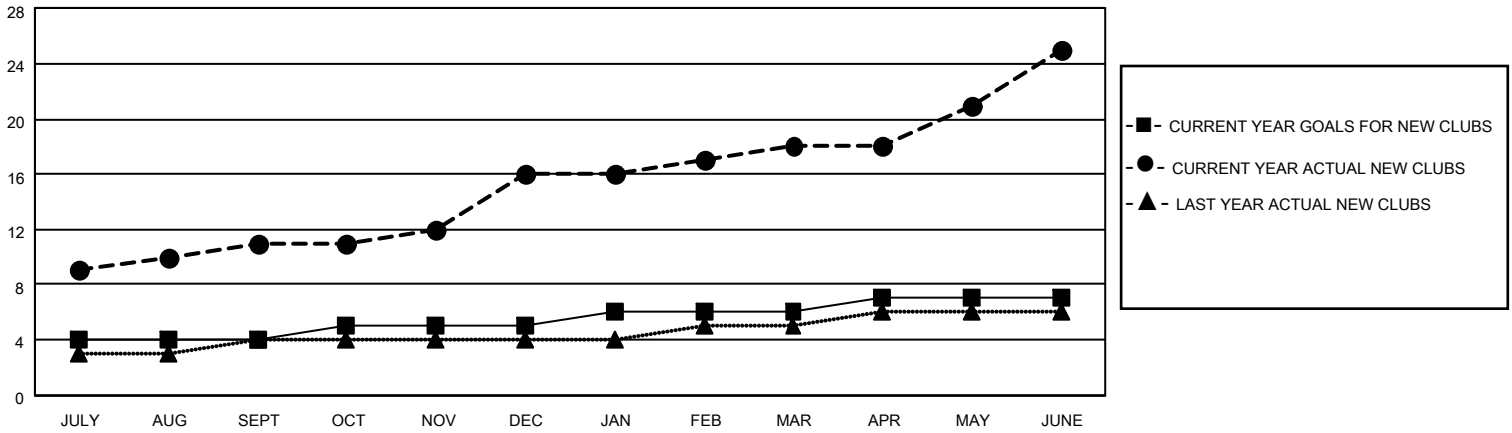
District 321A2

Results as of: 6/30/2021

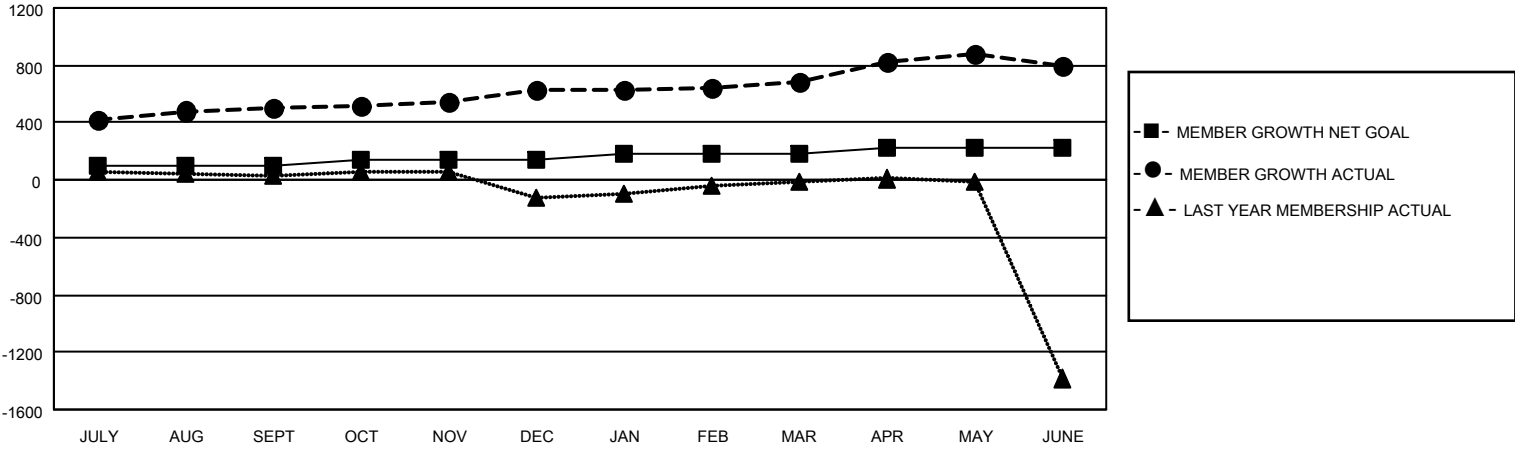
Clubs			
RESULTS FOR 2020-2021			
QUARTER	NEW CLUB GOAL	NEW CLUBS	DROPPED CLUBS
JULY/AUG/SEPT	4	11	2
OCT/NOV/DEC	1	5	1
JAN/FEB/MAR	1	2	11
APR/MAY/JUNE	1	7	0

Members			
RESULTS FOR 2020-2021			
QUARTER	MEMBER GROWTH NET GOAL	MEMBER GROWTH ACTUAL	DROPPED MEMBERS ACTUAL (including transfers)
JULY/AUG/SEPT	100	775	80
OCT/NOV/DEC	40	313	161
JAN/FEB/MAR	40	193	84
APR/MAY/JUNE	40	592	447

GOALS AND ACTUAL NEW CLUBS CUMULATIVE



GOALS AND ACTUAL MEMBERS CUMULATIVE



DROPPED CLUBS: 14

127 CLUBS OF 163 ADDED 1 OR MORE NEW MEMBERS

GENDER DISTRIBUTION

MALE 2,477 (65.17%)
 FEMALE 1,324 (34.83%)

DROPPED MEMBERS

[CLICK HERE FOR CUMULATIVE MEMBERSHIP DATA](#)

DECEASED	33
CLUB CANCELLED	75
OTHER	663
TOTAL	771

TOTAL FAMILY UNIT MEMBERS	2,744
FAMILY MEMBERS PAYING HALF DUES	1,627